



# **HIVES FOR HUMANITY**

## **Autumn, 2022**

[IMAGE DESCRIPTION: A fireweed meadow bursts with pink and purple flowers. Blue sky frames the plants along with green foliage.]



**HIVES FOR HUMANITY SOCIETY IS A NON-PROFIT ORGANIZATION THAT DEEPENS COMMUNITY THROUGH THE INCLUSIVE CULTURE THAT WE GROW AROUND THE HONEY BEE HIVE: IN OUR GARDENS OF CARE.**

*WE CREATE TRANSFORMATIONAL MOMENTS.*

*Thank you for connecting to support our work*

We are working with people, plants and pollinators on the traditional, ancestral and unceded Coast Salish Territories – Sḵw̓x̓wú7mesh (Squamish), Səlílwətaʔ/Selilwitulh (Tsilil-Waututh) and xʷməθkʷəy̓əm (Musqueam) Nations. Learning from urban Indigenous and frontline communities that are actively working to slow down colonial systems, informing our practice of community care.





[IMAGE DESCRIPTION: (left) A pair of ladybug pollinators rest on a nettle leaf. (middle) a honey bee collects the pollen from a rock rose flower. (right) a swallowtail butterfly drinks th pollen from a pink sweet william flower..

## WHAT KINDS OF TRANSFORMATIONAL MOMENTS DO WE CARE ABOUT?

RELATIONSHIP  
TO SELF AND  
COMMUNITY

SLOW,  
SUCCESSIONAL,  
SUSTAINABLE  
ORGANIZING

PEOPLE,  
PLANTS,  
POLLINATORS

THE SEASONAL  
PASSAGE OF  
TIME

# WHERE WE BEGAN, GARDENS AS CULTURE *HISTORY OF LAND, LISTENING SLOW*



[IMAGE DESCRIPTION: (left) 'Native Land' by Lincoln Clarkes circa 1999. (right) Hastings Folk Garden circa 2019. Both photos display the same angle looking through the land towards the New Brandiz hotel.

---

On the 100 block of East Hastings in what is colonially known as Vancouver, British Columbia, and which has many other names, including K'emk'em'elay, the Place Where the Maples Grow, the unceded lands and shared territories of the Musqueam, Squamish and Tsleil Wau'tuth Nations since time immemorial, time out of mind - there is a garden.

# **FIELDHOUSE PROPOSAL,**

## **LIVING LAB**

### *RESOURCING COMMUNITY CARE*

The Hastings Folk Garden is a 12-year old community garden that is cared for daily by members and residents of the Downtown Eastside community. It has provided space for access to nature and connection through this pandemic, extreme weather and overlapping crises. Through all of this, the garden is thriving - it is home to a traditional sweat lodge, a therapeutic apiary, a medicinal pollinator garden, cultural and art projects, trees, hummingbirds, a red-tailed hawk and many native bees.

We have dreams of acquiring this land at 117 East Hastings st. from developers and transforming it into a community land trust as a pathway out of ownership and into relationship. To move towards this, we are mapping our resistance strategy that visions worlds where the police budget is redistributed into community care networks while deepening our knowledge of the memories and languages held within these soils since time out of mind and supporting our youth in stepping into holding change.

**This fieldhouse would offer respite from precarity, a place to further deepen our roles, relationships and responsibilities to ourselves, the land and each other and an embodied location to continue our work of succession - offering care across space and time to resource the upcoming youth with skills, tools and knowledge.**

A 'Living Lab' focusing on succession for H4H through collaboration and community care: forest gardening (tending native plants and pollinators), learning about what the land once was, building a fireweed meadow, installing hives to produce fireweed honey, a seed library, seasonal celebration, monitoring community care and sustainable organizing through noticing, using & growing our governance offerings and arts-based community development principles -

# FIELDHOUSE, ANCHOR TENANT



## HIVES FOR HUMANITY (H4H) *PEOPLE, PLANTS & POLLINATORS*

LEARNING FROM FIREWEED  
AND THE CULTURES OF THE  
HIVE, WHAT DOES IT TAKE  
TO BUILD COMMUNITIES?

AS GUESTS, HOW DO WE  
ORGANIZE SUSTAINABLY  
WITH JOY, OPPORTUNITY  
AND INCLUSION AMIDST  
THE PRECARIETY OF LAND?

HOW DO WE DOCUMENT  
PRECIOUS RELATIONSHIPS  
WITHOUT BEING  
EXTRACTIVE?

HOW DO WE PASS ON OUR  
KNOWLEDGE, MENTOR  
YOUTH AND APPROACH  
SUCCESSION ACROSS  
GENERATIONS?









SOCIAL ENTERPRISE,  
CARE PRODUCTS  
*RESOURCING OUR SELF CARE*

HIVES FOR HUMANITY  
HOSTS A SOCIAL  
ENTERPRISE WHERE WE  
RESOURCE OUR SOCIETY  
AND SELVES THROUGH THE  
SHARING OF SKILLS AND  
SELLING OF PRODUCTS.



# MONTHLY CROSS POLLINATING

MENTOR AND YOUTH COLLABORATOR SPRING 2023  
HAPPENINGS AT THE FIELDHOUSE

MON	TUE	WED	THU	FRI	SAT	SUN
		 <p><b>Pollinator Museum</b></p>				

deep listening  
seed stories  
mycelial care  
diy daddy

wax crafts  
embodied-weaving  
accordion

beekeeping  
self care  
community  
care



# GET INVOLVED WITH H4H

## DROP-IN SELF CARE



### **DTES SEED LIBRARY**

First Tuesday of the month - gather to work with seeds in the Cultural Sharing space in the Carnegie Theatre from 1-3pm

### **HASTINGS FOLK GARDEN**

Wednesdays 1 - 3pm at 117 East Hastings, gather to care for the garden and engage in the sensory respite

### **SELF EDUCATION**

Engage remotely or independently with our: plant and pollinator guides; interpretive signage; monthly noticing practices; all shared through open-source resources for community care.

### **SENSORY CARE KIT**

Borrow, grow, engage with our growing self care kits which include sensory respite offerings, sound recording devices, and plant medicines.



# GET INVOLVED WITH FIELDHOUSE

## COLLABORATIVE COMMUNITY CARE & ENGAGEMENT

### ARTIST COLLABORATIONS

Gather with us to collaborate and share in resourcing *ceremony, celebration and memorial*: bringing your unique artistic and community engaged practice around land, food, care, art, culture and community; building our proposals together around our practice of *How We Host* - honouring the role of witness, the ceremony of the circle, and reciprocity in relationships.

### SEASONAL WORKSHOPS

Bring our H4H team into your community, or join us in our gardens of care, for seasonal workshops including:

- 1) Building a Healthy Hive (honey bee workshop)
- 2) Creating with Gifts from the Honey Bees (wax crafts workshops)
- 3) Be(e)ing a Good Neighbour (Governance and Accountability with the Land and Each Other)



# FIELDHOUSE, MENTORS

## Gentle Geographies Mycelial Care



*MYCELIAL CARE RESTORES  
NATURAL SYSTEMS THROUGH  
MULTI-SENSORY CARE BY  
BUILDING SOIL, GROWING  
MEDICINAL MUSHROOMS,  
TENDING A FIREWEED MEADOW,  
HOSTING AN ANCESTRAL AND  
IRREPLACEABLE ECOSYSTEMS  
SEED LIBRARY, GROWING NATIVE  
PLANT TEA AND SMOKE MIXES,  
KEEPING HONEYBEES AND  
PREPARING INFUSED HONEY  
WHILE CONSIDERING FOREST  
SUCCESSION AND DURATIONAL  
COMMUNITY CARE.*

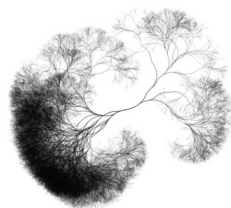
## Time & Times

### Community Weaver



*A COMMUNITY WEAVER  
FACILITATES COMING  
TOGETHER THROUGH LAND,  
FOOD, COMMUNITY AND  
PLANT CARE IN COMPLEX  
SPACES OF DIFFERENCE,  
TOWARDS EMERGENT  
FUTURES OF  
INTERCONNECTION.*

## Centre of Gravity Martial Artist



*INTEGRATING MARTIAL ARTS PRINCIPLES OF MIND-BODY-  
SPIRIT WITH NATURAL GARDENING PRINCIPLES SUPPORT OUR  
ABILITY TO RELATE FROM AND WITH OUR ECOLOGICAL  
IDENTITIES AS HUMAN BEINGS ON THIS PLANET. IN A  
HISTORICAL MOMENT OF CLIMATE CHANGE AND INTERSECTING  
SOCIAL TRANSITION, WE RECOGNIZE EACH OF OUR BODIES AS  
THE CARRIERS OF OUR WHOLE LIFE'S STORIES. EVEN IF OUR  
BRAIN MAY HAVE FORGOTTEN, OUR BODIES CARRY OUR  
EXPERIENCES FROM BIRTH. OUR CELLS CARRY THOSE OF OUR  
ANCESTORS.*

# FIELDHOUSE, YOUTH COLLABORATORS

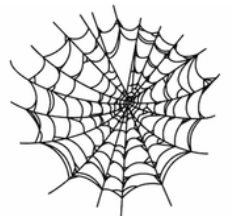
## ECO-ECHO EONS

**ECO-ECHO EONS (EEE)** IS A CREATIVE, RELATIONAL, RESEARCH PROJECT WHICH SEEKS TO GROW WITH COMMUNITY TOWARDS THE PURPOSE OF CREATIVE EXPRESSION AND JOY. FOCUSES OF THIS PROJECT INCLUDE LEARNING AND SHARING VARIOUS ECO-ART AND TRADITIONAL SKILLS AND GIFTS, FOODS AND MEDICINES IN WORKSHOPS WITH COMMUNITY, AS WELL AS STORYTELLING AND COLLABORATION THROUGH ZINE-CREATION. THE PURSUIT OF ECO-ECHO EONS IS TO HELP AWAKEN CREATIVITY WITHIN PEOPLE AND CREATE A BRIDGE TOWARDS STRONGER STEWARDSHIP AND RELATIONSHIP WITH THE LAND.



## POLLINATOR MUSEUM

**A POLLINATOR MUSEUM** IS A GALLERY AND GATHERING SPACE OF PLANTS, POLLINATORS AND PEOPLE; TO POLLINATE IDEAS, CREATIVITY, AND CARE UNTO EACH OTHER. HAVING PRACTICED A VARIETY OF THEATRE, MUSIC, AND DANCE, TRAVIS LIKES TO CROSS POLLINATE CREATIVITY INTO COMMUNITY CARE. THEY ARE INSPIRED BY THE OPPORTUNITY OF VARIETY; INVITING DIVERGENT THINKING AND BEHAVIOUR INTO SHARED SPACE TO RELAX, RECEIVE OFFERINGS OF CREATIVITY FROM THE COMMUNITY, AND OFFER SAFE SPACE TO CREATE, AND CURATE IDEAS. THEIR EXPERIENCE BEING AN INDO-QUEER, GEMINI, ADHD MULTI POTENTIALITE, HAS PROVIDED ACCESS TO A SPECTRUM OF PEOPLE AND IDEAS. THEY BELIEVE IN BEING GROUNDED THROUGH GARDENS AND ART. SHE'S INSPIRED BY MOVEMENT OF WILLOW TREES, SPIDER WEBS, AND EXPRESSIONS OF GRIEF AND AFFECTION.





**HASTINGS FOLK garden**  
**K'EMK'EMEL'AY** **117**  
EAST HASTINGS  
unceded land of  
Musqueam, Squamish & Tsilhqot'in

everyone is welcome - we keep us safe **Drop in**  
contact [info@hivesforhumanity.com](mailto:info@hivesforhumanity.com) visit: wednesdays 1-3pm